



车轮上的数据中心—MOLEX天线解决方案 MOLEX ANTENNAS FOR CONNECTED VEHICLES

产品经理 (GLOBAL PRODUCT MANAGER)
骆宁 (NING LUO)

7/12/2022



molex

CONTENTS

- **Part I : General Applications in Automotive Products**
- **Part II : Molex Internal Antennas for Automotive Infotainment**
- **Part III : Molex External Antennas for Automotive Applications**



**PART I :
GENERAL APPLICATIONS IN AUTOMOTIVE PRODUCTS**



贸泽电子
MOUSER ELECTRONICS



molex

UPGROWING WIRELESS CONNECTIONS IN VEHICLES

- **Antenna applications in vehicles: Cellular, GNSS, Wi-Fi, Bluetooth, wireless charging, sensor and detecting... connectivity solutions that enhance the communication, driving and riding experience.**



- **Antenna applications on the road: Keyless entry, V2I, V2X**





**PART II :
MOLEX INTERNAL ANTENNAS FOR
AUTOMOTIVE INFOTAINMENT**



206640 SERIES:

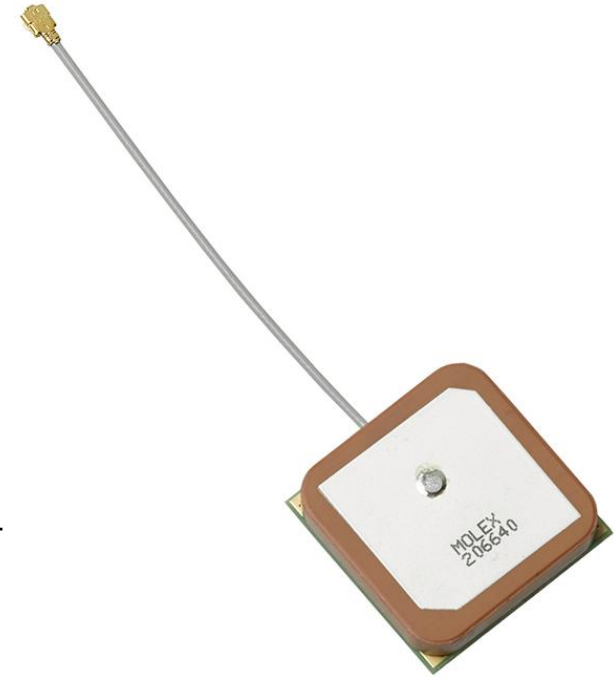
GNSS ACTIVE PATCH ANTENNA WITH LNA (206640)

Product overview:

- Full GNSS bands coverage
- Ceramic patch, 28dB two-stage LNA
- Dimension 25 x 25 x 6.5mm, connecting 60mm-long coax cable and U.FL connector
- RoHS-compliant

Key Features:

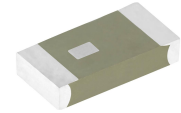
- Excellent performance(>70%eff) working on Non-clearance PCB
- GNSS all protocol covered (GPS/Beidou/GLONASS/Galileo)
- Automotive standard



206774 SERIES:- WI-FI 6E TRI-BAND 2.4/5/6GHZ SMT CERAMIC CHIP ANTENNA, CORNER MOUNT

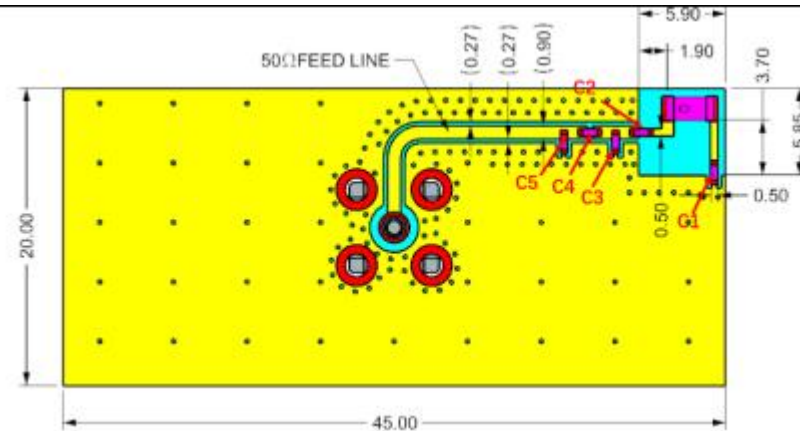
Product overview:

- ü Full Wi-Fi bands coverage
- ü SMT Ceramic Chip Antenna
- ü 3.2 x 1.6 x 0.65mm with a PCB keep-out area of 5.9 x 5.85mm
- ü RoHS-compliant



Key Features:

- ü Excellent performance (>55% radiation efficiency)
- ü Wi-Fi Tri-band covered, especially Wi-Fi new band 6E
- ü Automotive standard



146153 SERIES:

WI-FI 6E FLEX CABLE BALANCE ANTENNA

Product overview:

- Full Wi-Fi bands coverage
- FPC antenna with Cable and Connector
- 35 x 9 x 0.1mm, connecting micro coaxial cable and U.FL connector
- RoHS Compliant



Key Features:

- Excellent performance (>70% radiation efficiency)
- Wi-Fi Tri-band covered, especially Wi-Fi new band 6E
- Automotive standard



PART III :
MOLEX EXTERNAL ANTENNAS FOR AUTOMOTIVE APPLICATIONS



贸泽电子
MOUSER ELECTRONICS

molex

215868 SERIES

2.4GHZ / 5GHZ WI-FI ON-METAL ANTENNA (215868)

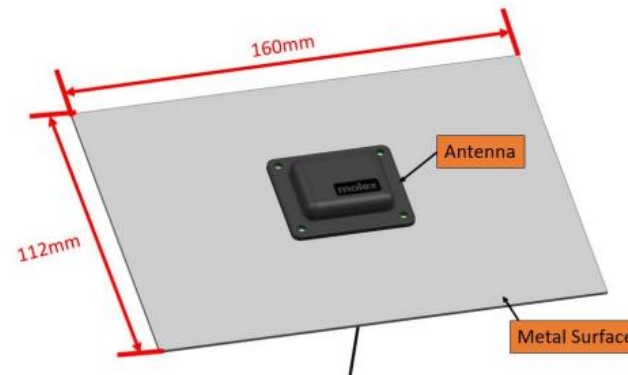
Product overview:

- ❖ Antenna size: 44 x 37 x 8.5mm
- ❖ Cable length: 300mm
- ❖ Connector: U.FL
- ❖ Mounting method: Adhesive / Screw-mounting



Key Features:

- ❖ Excellent performance on metal surface
- ❖ IP67-rated
- ❖ Automotive standard



216589 SERIES

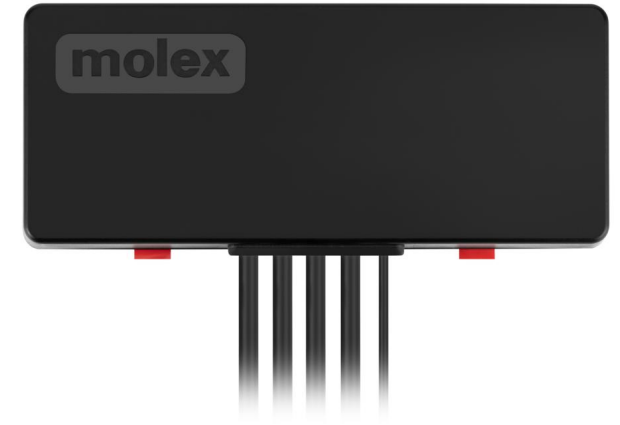
5-IN-1 5G/WI-FI/GPS MULTI-HUB ANTENNA

Product overview:

- ❖ Antenna size:155 x 65 x 20mm
- ❖ Cable length: 1000mm
- ❖ Connector: SMA (Adjustable)
- ❖ Mounting method: Adhesive

Key Features:

- ❖ Full-band LTE/5G NR*2, Wi-Fi/BT/V2X*2, GNSS*1
- ❖ Excellent performance even on metal surface
- ❖ IP67-rated
- ❖ Automotive standard



RESOURCES FOR ANTENNA INFORMATION

References:

1. “Antenna” [search results](#) on Molex.com
2. [Molex Antennas and Antenna Assemblies Web Overview](#)
3. [Antenna Literature](#) on Molex Content Hub

THANK YOU

Ning.Luo@molex.com



molex